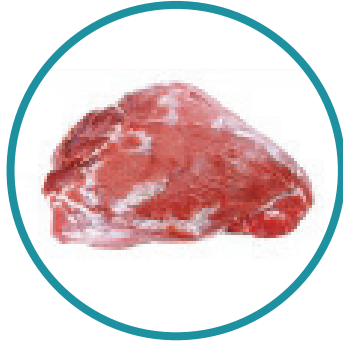


BEEF MEAT CUTS



Robbed Forequarter



Topside



Knuckle



Silverside



Rumpsteak



Striploin



Tenderloin



Shin & Shank



Heel Muscle

BEEF MEAT CUTS



Chuck & Blade



Eyeround



Flank



Brisket NE



Cube Roll



Chuck Tender

BEFF OFFAL'S



Cheek Meat



Liver



Heart



Kidney



Lungs



Tongue



Tail



Tripe



Honeycomb

BEEF OFFALS



Aorta



Hock Tendon



Paddywach



Spinal Cord



Brisket Fat-Dakree



Salted Omasun